



Child Protection and Safeguarding Policy

This policy was adopted by the Trustees
of Ivy Education Trust on
8 October 2024

Review date: See amendment/review record



**Newton
Abbot
College**

Contents

Trust Safeguarding Statement and contacts	Page 4
Terminology	Page 5
1. Introduction	Page 5
2. Policy Principles	Page 5
3. Policy Aims	Page 6
4. Values	Page 6
5. Safe Trust, Safe Staff	Page 7
6. Roles and Responsibilities	Page 8
7. Confidentiality	Page 11
8. Child Protection Procedures	Page 11
9. Children who are particularly vulnerable	Page 14
10. Anti-Bullying / Cyberbullying	Page 15
11. Racist Incidents	Page 15
12. Radicalisation and Extremism	Page 15
13. Domestic Abuse	Page 16
14. Exploitation (including CSE, CCE and County Lines)	Page 16
15. Female Genital Mutilation (FGM)	Page 17
16. Forced Marriage	Page 18
17. Honour based Abuse	Page 18
18. One Chance Rule	Page 18
19. Mental Health	Page 19
20. Private Fostering Arrangements	Page 19
21. Looked After Children & Previously Looked After Children	Page 19
22. Children Missing Education	Page 20
23. Online Safety	Page 20
24. Child on child Abuse (Child on Child)	Page 20
incl Sexual violence and sexual harassment	
25. Youth Produced Sexual Imagery (Sexting)	Page 21
26. Allegations against Staff	Page 23
27. Whistle-blowing	Page 24

28. Physical Intervention	Page 24
29. Confidentiality and Information Sharing	Page 24
30. Linked Policies	Page 25
31. Summary of Changes Sept 2023 and Amendment Record	Page 25
Appendix 1 – Recognising signs of child abuse	Page 28
Appendix 2 – Sexual Abuse & Sexual Harassment	Page 32
Appendix 3 – Exploitation (incl CSE & CCE)	Page 34
Appendix 4 – Female Genital Mutilation	Page 36
Appendix 5 – Domestic Abuse (incl Operation Encompass)	Page 38
Appendix 6 – Indicators of vulnerability to Radicalisation	Page 39
Appendix 7 – What to do if you have an online safety concern	Page 41
Appendix 8 – Resources	Page 42
Appendix 9 – MASH (Multi Agency Safeguarding Hub) contacts	Page 43

Child Protection and Safeguarding Policy

Safeguarding Trustee:	Nick Tallamy
Trust Designated Safeguarding Lead:	Claire Fleming
Status & Review Cycle:	Statutory/Annual
Next Review Date:	September 2025

Trust Safeguarding Statement

The Ivy Education Trust recognise our moral and statutory responsibility to safeguard and promote the welfare of all pupils and expects all staff, trustees, local governors and volunteers to share this commitment. We recognise that all children, regardless of age, disability, gender reassignment, race, religion or belief, sex, sexual orientation or SEND have an equal right to protection from all types of harm or abuse. We endeavour to provide a safe and welcoming environment where children are respected and valued. We are alert to the signs of abuse and neglect and follow our procedures to ensure that children receive effective support, protection and justice. We listen to our pupils and take seriously what they tell us, children are aware of the adults they can talk to if they have a concern. When there are concerns for a child's welfare we may need to share information and work in partnership with other agencies. We will ensure concerns are discussed with parents/carers first unless we have reason to believe that by doing so would be contrary to the child's welfare. Child protection forms part of the Trust's safeguarding responsibilities and we take a zero tolerance approach to abuse. The Child Protection and Safeguarding policy underpins and guides the Ivy Education Trust and its schools' procedures and protocols to ensure all its pupils and staff are safe.



Newton Abbot College
 Old Exeter Road
 Newton Abbot
 Devon
 TQ12 2NF
 Telephone: 01626 367335

Status and Review Cycle	Statutory/Annual
Next Review Date	September 2025
Safeguarding Statement	
The school recognises its moral and statutory responsibility to safeguard and promote the welfare of all pupils. We endeavour to provide a safe and welcoming environment where children are respected and valued. We are alert to the signs of abuse and neglect and follow our procedures to ensure that children receive effective support, protection and justice. Child protection forms part of the school's safeguarding responsibilities.	
Designated Safeguarding Lead (DSL)	Laura Pearl
Deputy Designated Safeguarding Lead/s	Holly Vine Sophie Summerhayes
Online Safety Coordinator	Laura Pearl
Headteacher/Head of School	Amy Grashoff
Safeguarding Governor	Russell Satterley
Chair of Governors	Simon Shadbolt

Terminology

Safeguarding and promoting the welfare of children is defined as:

- providing help and support to meet the needs of children as soon as problems emerge.
- protecting children from maltreatment, whether that is within or outside the home, including online.
- preventing impairment of children's mental and physical health or development.
- ensuring that children grow up in circumstances consistent with the provision of safe and effective care.
- promoting the upbringing of children with their birth parents, or otherwise their family network through a kinship care arrangement, whenever possible and where this is in the best interests of the children.
- taking action to enable all children to have the best outcomes in line with the outcomes set out in the Children's Social Care National Framework.

(Working Together to Safeguard Children)

Child Protection is a part of safeguarding and promoting welfare. It refers to the activity that is undertaken to protect specific children who are suffering, or are likely to suffer, significant harm. This includes harm that occurs inside or outside the home, including online.

Staff refers to all those working for or on behalf of the Trust, full or part time, temporary or permanent, in either a paid or voluntary capacity.

Child includes everyone under the age of 18 or 25 if a care leaver.

Parents refers to birth parents and other adults who are in a parenting role, for example step-parents, foster carers, adoptive parents and LA corporate parents.

1. Introduction

Safeguarding legislation and guidance

The following safeguarding legislation and guidance has been considered when drafting this policy:

- Section 175 of the Education Act 2002 (maintained Trusts only)
- Section 157 of the Education Act 2002 (Independent Trusts only, including academies and CTCs)
- The Education (Independent Trusts Standards) (England) Regulations 2003 (Independent Trusts only, including academies and CTCs)
- The Safeguarding Vulnerable Groups Act 2006
- The Teacher Standards 2012
- Working Together to Safeguarding Children 2023
- Keeping Children Safe in Education 2023
- Information Sharing 2018
- What to do if you're worried a child is being abused 2015
- Filtering and monitoring standards in schools and colleges (DfE)

2. Policy Principles

The welfare of the child is paramount.

- All children regardless of age, gender, culture, language, race, ability, sexual identity or religion have equal rights to protection, safeguarding and opportunities.
- We recognise that all adults, including temporary staff¹, volunteers and governors, have a full and active part to play in protecting our pupils from harm and have an equal responsibility to act on any suspicion or disclosure that may suggest a child is at risk of harm.

¹ Wherever the word "staff" is used, it covers ALL staff on site, including ancillary supply and self-employed staff, contractors, volunteers working with children etc. and governors.

- All staff believe that our Trust and our schools should provide a caring, positive, safe and stimulating environment that promotes the social, physical, mental wellbeing and moral development of the individual child.
- Pupils and staff involved in child protection issues will receive appropriate support and supervision.

3. Policy Aims

- To raise the awareness of all teaching and non-teaching staff of the need to safeguard children and of their responsibilities in identifying and reporting possible cases of abuse.
- Provide all staff with guidance on the procedures they should adopt in the event that they suspect a child, young person may be experiencing, or be at risk of experiencing, harm. Including (by DSL/DDSL) consideration of the use of appropriate assessments, resources and agency support.
- To provide an environment in which children and young people feel safe, secure, valued and respected, and feel confident to, and know how to approach adults if they are in difficulties, believing they will be effectively listened to should they make a disclosure.
- To demonstrate the Trust and its schools' commitment with regard to safeguarding and child protection to pupils, parents and other partners.
- Safeguarding incidents and/or behaviours can be associated with factors both in and outside of school or college; and abusers can be both adult/s to child/ren or child/ren to child/ren (child on child). All staff (but especially the Designated Safeguarding Lead (DSL) (or deputy) will be considering the context within which such incidents and/ or behaviours occur: familial or contextual.
- To ensure the Designated Safeguarding Lead (or deputy) (DSL) and all staff will give full consideration to the use of appropriate assessments, resources and agency support when identifying the factors present in a child's life that are a threat to their safety and/or welfare. (Familial or contextual.)
- To provide a systematic means of monitoring children known or thought to be at risk of harm, and ensure we, the Trust, contribute to assessments of need and support packages for those children.
- To emphasise the need for good levels of communication between all members of staff and the designated safeguarding leads internally, and with external agencies and partners, including our contribution to assessments, referrals, and support plans.
- To develop a structured procedure within the Trust and its schools which will be followed by all members of the Trust community in cases of suspected abuse.
- To develop and promote effective working relationships with other partnership agencies, especially the Police (health and CSC (Children's Social Care), and MASH (Multi Agency Safeguarding Hub).
- To support the child's development in ways that will foster security, confidence and independence.
- To ensure that all staff working within our Trust who have substantial access to children have been checked as to their suitability, including verification of their identity, qualifications, and a satisfactory DBS check (according to guidance)², and a single central record is kept for audit.
- Provide clarity and expectations on professional behaviours and code of conduct including lone working requirements.

4. Values

Supporting Children.

- a. We recognise that a child who is abused or witnesses' violence may feel helpless and humiliated, may blame themselves, and find it difficult to develop and maintain a sense of self-worth.
- b. We recognise that the school may provide the only stability in the lives of children who have been abused or who are at risk of harm.
- c. We accept that research shows that the behaviour of a child in these circumstances may range from that which is perceived to be normal to aggressive or withdrawn as well as exhibiting signs of mental health problems.

² Guidance regarding DBS checks recently updated by the Protection of Freedoms Act 2012

- d. We understand the impact on a child's mental health, behaviour and education when experiencing difficulties, abuse and/or neglect.

Our Trust and our schools will support all children by:

- e. encouraging self-esteem and self-assertiveness, through the curriculum as well as our relationships, whilst not condoning aggression or bullying; (incl. Cyber bullying).
- f. promoting a caring, safe and positive environment within the Trust;
- g. responding sympathetically to any requests for time out to deal with distress and anxiety;
- h. offering details of helplines, counselling or other avenues of external support;
- i. liaising and working together with all other settings, support services and those agencies involved in the safeguarding of children;
- j. notifying children's social care as soon as there is a significant concern;
- k. providing continuing support to a child about whom there have been concerns who leaves the schools by ensuring that appropriate information is copied under confidential cover to the child's new setting and ensuring the school medical records are forwarded as a matter of priority;
- l. children are taught to understand and manage risk through our Personal, Social, Health and Economic (PSHE) education and Relationship and Sex Education (RSE) and through all aspects of Trust life. This includes online safety;
- m. by accessing and utilising the necessary resources, guidance and toolkits to support the identification of children requiring mental health support, support services and assessments and the subsequent systems and processes: and
- n. reassuring victims that they are being taken seriously and that they will be supported and kept safe.

Prevention / Protection

- o. We recognise that the Trust and our schools plays a significant part in the prevention of harm to our children by providing children with good lines of communication with trusted adults, supportive friends and an ethos of protection.

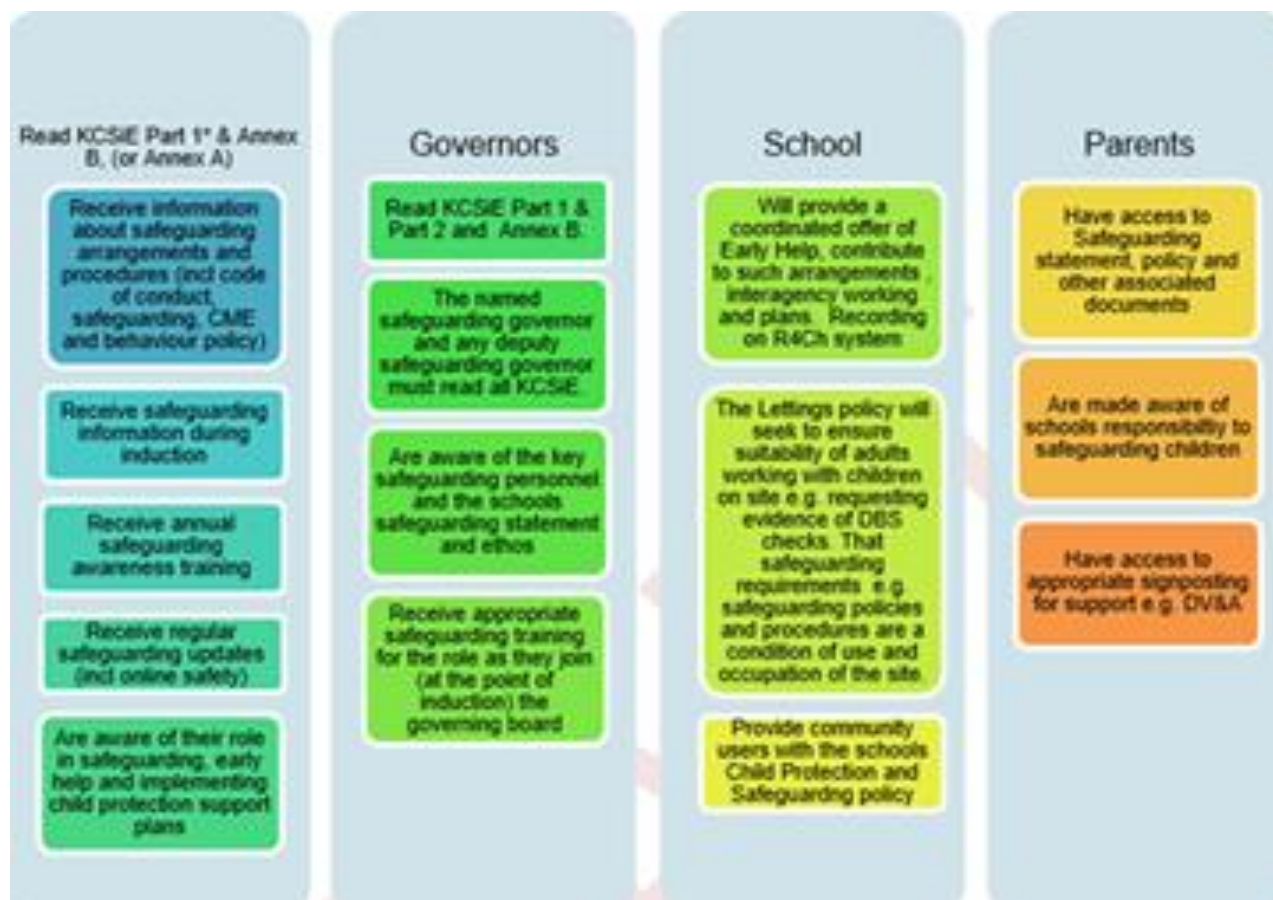
The Trust and our school's community will therefore:

- p. work to establish and maintain an ethos where children feel secure, are encouraged to talk and are always listened to;
- q. include regular consultation with children e.g. through safety questionnaires, participation in anti-bullying week, asking children to report whether they have had happy/sad lunchtimes/playtimes;
- r. ensure that all children know there are adults within their school community whom they can approach if they are worried or in difficulty;
- s. include safeguarding across the curriculum, including PSHE, opportunities which equip children with the skills they need to stay safe from harm and to know to whom they should turn for help; in particular this will include anti-bullying work, information about child on child abuse (sexual harassment and sexual violence, consent), online-safety, road safety, pedestrian and cycle training; provide focused activities to prepare key year groups for transition to new settings and/or key stages e.g. more personal safety/independent travel; and
- t. ensure all staff, pupils and parent are aware of Trust guidance for their use of mobile technology and the safeguarding issues around the use of mobile technologies and their associated risks have been shared.

³The code of conduct should include acceptable use of technology, staff & pupil relationship boundaries and communications, including the use of social media.

5. Safe Trust, Safe Staff

We will ensure that staff, Governors, Trustees, School and parents:



6. Roles and Responsibilities

- a. All members of the Trust board and the local governing body of each school understand and fulfil their responsibilities, namely to ensure that there is a Child Protection and Safeguarding policy together with the Trust Code of Conduct.
- b. Child protection, safeguarding, recruitment and managing allegations policies and procedures, including the Code of Conduct, are consistent with Devon Children and Families Partnership and statutory requirements, are reviewed annually and that the Child Protection and Safeguarding policy is publicly available on the Trust website or by other means.
- c. Ensures that all staff including temporary staff and volunteers are provided with the Trust's Child Protection and Safeguarding policy and staff Code of Conduct.
- d. All staff have read Keeping Children Safe in Education (2024) Part 1 and those mechanisms are in place to assist staff in understanding and discharging their roles and responsibilities as set out in the guidance.
- e. The Trust operates a safer recruitment procedure that includes statutory checks on staff suitability to work with children and disqualification by association regulations and by ensuring that there is at least one person on every recruitment panel who has completed safer recruitment training.
- f. The Trust has procedures for dealing with allegations of abuse against staff (including the Headteacher), supply staff, volunteers and against other children and that a referral is made to the DBS if a person in regulated activity has been dismissed or removed due to safeguarding concerns, or would have had they not resigned.
- g. A member of the Trust Board, either the Chair or the Safeguarding Trustee, is nominated to liaise on Child Protection issues and in the event of an allegation of abuse made against the Headteacher.
- h. A member of the senior leadership team has been appointed as the Designated Safeguarding Lead (DSL) by the Headteacher of the school who will take lead responsibility for safeguarding and child protection and that the role is explicit in the role holder's job description.
- i. On appointment, the DSL and deputy(ies) undertake appropriate Level 3 identified training offered by DCFP or other provider every two years.
- j. All other staff have safeguarding training updated as appropriate; but at least annually.
- k. At least one member of the governing body has completed safer recruitment training to be repeated every five years.
- l. Appropriate safeguarding responses are in place for children who go missing from education, particularly on repeated occasions, to help identify the risk of abuse and neglect including sexual abuse or exploitation and to help prevent the risks of their going missing in future.
- m. Appropriate online filtering and monitoring systems are in place.
- n. Enhanced DBS checks for all Trustees and Local Governors.
- o. Any weaknesses in Child Protection are remedied immediately.

The Headteacher will ensure that:

- p. the school's individual Child Protection and Safeguarding policy and procedures are implemented and followed by all staff;
- q. sufficient time, training, support, resources, including cover arrangements where necessary, is allocated to the DSL (Designated Safeguarding Lead) and deputy(ies) DSL(s) to carry out their role effectively, including the assessment of pupils and attendance at strategy discussions and other necessary meetings;
- r. where there is a safeguarding concern that the child's wishes, and feelings are taken into account when determining what action to take and what services to provide;
- s. systems are in place for children to express their views and give feedback which operate with the best interest of the child at heart;
- t. all staff feel able to raise concerns about poor or unsafe practice and that such concerns are handled sensitively and in accordance with the whistle-blowing procedures;

- u. that pupils are provided with opportunities throughout the curriculum to learn about safeguarding, including keeping themselves safe online;
- v. they liaise with the Local Authority Designated Officer (LADO), before taking any action and on an ongoing basis, where an allegation is made against a member of staff, supply staff or volunteer; and
- w. anyone who has harmed or may pose a risk to a child is referred to the Disclosure and Barring Service.

The Designated Safeguarding Lead (DSL):

- x. holds ultimate responsibility for safeguarding and child protection (including online safety) in the Trust and is a member of the SLT;
- y. acts as a source of support and expertise in carrying out safeguarding duties for the whole Trust community;
- z. will have the necessary knowledge and understanding to recognise possible children at risk of contextual and/or familial abuse or exploitation;
- aa. encourages a culture of listening to children and taking account of their wishes and feelings;
- bb. refreshes every two years their knowledge and skills to enable them to carry out the role and at regular intervals but at least annually accesses updates to keep up with any developments relevant to their role;
- cc. will refer a child if there are concerns about possible abuse, to the MASH (Multi Agency Safeguarding Hub)⁴, and act as a focal point for staff to discuss concerns. Enquiries⁵ must be followed up in writing, if referred by telephone;
- dd. will keep detailed, accurate records, either written or using appropriate online software, of all concerns about a child even if there is no need to make an immediate referral;
- ee. will ensure that all such records are kept confidential, stored securely and are separate from pupil records, until the child's 25th birthday;
- ff. will ensure that an indication of the existence of the additional file is marked on the pupil records;
- gg. will ensure that when a pupil leaves the school, relevant child protection information is passed to the new Trust (separately from the main pupil file) as soon as possible, ensuring secure transit and that confirmation of receipt is obtained;
- hh. in addition to the child protection file, the DSL (Designated Safeguarding Lead) should also consider if it would be appropriate to share any information with the DSL of the new school or college in advance of a child leaving; for example, information that would allow the new Trust or college to continue supporting victims of abuse and have that support in place for when the child arrives. All transfers should be made securely;
- ii. will liaise with the Local Authority, its safeguarding partners⁶ and work with other agencies and professionals in line with Working Together to Safeguard Children;
- jj. has a working knowledge of DCFP (Devon Children and Families Partnership) procedures;
- kk. will ensure that either they, or another staff member, attend case conferences, core groups, or other multi-agency planning meetings, contribute to assessments, and provide a report where required which has been shared with the parents;
- ll. will ensure that any pupil currently with a child protection plan who is absent in the educational setting without explanation for two days is referred to their social worker;
- mm. will ensure that all staff sign to say they have read, understood and agree to work within the Trust's Child Protection and Safeguarding policy, the Trust Code of Conduct and Keeping Children Safe in Education Part 1*, along with Annex B. This is the same for all volunteers within the Trust);
- nn. will organise child protection and safeguarding induction, regularly updated training and a minimum of annual updates (including online safety) for all Trust staff, keep a record of attendance and address any absences;
- oo. will contribute to and provide, with the Headteacher and Chair of Governors, the "Audit of Statutory Duties and Associated Responsibilities" (S175/157 audit) to be submitted annually to the Education Safeguarding Team working on behalf of Devon County Council;

⁴ All new enquiries go to the MASH, DSLs can consult on 0345 155 1071. In an emergency out of hours referrals can be made to the Emergency Duty Team on 0845 6000 388 or Police.

⁵ Online forms are available via [Devon County Council](#) or [DCFP](#).

- pp. has an understanding of locally agreed processes for providing early help and intervention and will support members of staff where Early Help and/or Safer Me (concerns around exploitation) is appropriate; and
- qq. will ensure that the name of the designated members of staff for Child Protection, the Designated Safeguarding Lead and deputies, are clearly advertised in the Trust, with a statement explaining the Trust's role in referring and monitoring cases of suspected abuse.

The Deputy Designated Safeguarding Lead(s) (DDSL):

- rr. is/ are trained to the same standard as the Designated Safeguarding Lead and, in the absence of the DSL, carries out those functions necessary to ensure the ongoing safety and protection of pupils. In the event of the long-term absence of the DSL the deputy will assume all of the functions above.

All Trust Staff:

- ss. understand that it is everyone's responsibility to safeguard and promote the welfare of children and that they have a role to play in identifying concerns, sharing information and taking prompt action;
- tt. consider, at all times, what is in the best interests of the child;
- uu. will be aware of the indicators of abuse and neglect both familial and contextual; and recognise that contextual harm can take a variety of different forms;
- vv. know how to respond to a pupil who discloses abuse through delivery of 'Working together to Safeguard Children', and 'What to do if you're worried a child is being abused';
- ww. will refer any safeguarding or child protection concerns to the DSL (Designated Safeguarding Lead) or if necessary where the child is at immediate risk to the police or MASH (Multi Agency Safeguarding Hub);
- xx. will be aware of the Case Resolution protocol or the duty to report concerns if the DSL (Designated Safeguarding Lead) fails to do so without reasonable cause;
- yy. are aware of the Early Help⁷ process and understand their role within it including identifying emerging problems for children who may benefit from an offer of Early Help, liaising with the DSL in the first instance and supporting other agencies and professionals in an early help assessment through information sharing. In some cases staff may act as the Lead Professional in Early Help cases;
- zz. will provide a safe environment in which children can learn; and
- aaa. will be able to reassure victims that they are being taken seriously.
- bbb. Being aware of systems within school which support safeguarding e.g. Safeguarding policy, behaviour policy, code of conduct, CME, online filtering and monitoring
- ccc. Attending regular safeguarding and child protection training.
- ddd. Recognising that children missing, or absent education can act as a vital warning sign to a range of safeguarding issues including neglect, sexual abuse and child sexual and criminal exploitation.

⁶ NPCC – when to call the police will support DSLs to understand when they should consider contacting the police and what to expect when they do

7. Confidentiality

- a. The Ivy Education Trust recognises that in order to effectively meet a child's needs, safeguard their welfare and protect them from harm the Trust and its schools must contribute to inter-agency working in line with Working Together to Safeguard Children and share information between professionals and agencies where there are concerns.
- b. All staff must be aware that they have a professional responsibility to share information with other agencies in order to safeguard children and that the Data Protection Act 2018⁸ is not a barrier to sharing information where the failure to do so would place a child at risk of harm.
- c. **All staff must be aware that they cannot promise a child to keep secrets which might compromise the child's safety or wellbeing.**
- d. However, we also recognise that all matters relating to child protection are personal to children and families. Therefore, in this respect they are confidential and the Headteacher or DSLs will only disclose information about a child to other members of staff on a need to know basis.
- e. We will always undertake to share our intention to refer a child to the Multi-Agency Safeguarding Hub with their parents /carers unless to do so could put the child at greater risk of harm, or impede a criminal investigation. If in doubt, we will contact the Multi-Agency Safeguarding Hub consultation line.
- f. In line with KCSiE all children's safeguarding files will be kept confidential and stored securely. Safeguarding files will be kept separate from pupils' schools' files.

8. Child Protection Procedures

- a. Abuse and neglect are forms of maltreatment of a child. Somebody may abuse or neglect a child by inflicting harm or by failing to act to prevent harm. Children may be abused in the family or in an institutional or community setting by those known to them or, more rarely, by others. Abuse can take place wholly online, or technology may be used to facilitate off line abuse. They may be abused by an adult or adults or by another child or children.
- b. Abuse and Neglect may also take place outside of the home, contextual safeguarding, and this may include (but not limited to), sexual exploitation criminal exploitation, serious youth violence, radicalisation.
- c. Further information about the four categories of abuse; physical, emotional, sexual and neglect, and indicators that a child may be being abused can be found in appendices 1 and 2.
- d. Any child in any family in any Trust could become a victim of abuse. Staff should always maintain an attitude of "It could happen here".
- e. There are also a number of specific safeguarding concerns that we recognise our pupils may experience;
 - i. child missing from education
 - ii. child missing from home or care
 - iii. child sexual exploitation (CSE), child criminal exploitation (CCE)
 - iv. bullying including cyberbullying
 - v. domestic abuse
 - vi. drugs
 - vii. fabricated or induced illness
 - viii. faith abuse
 - ix. female genital mutilation (FGM)
 - x. forced marriage
 - xi. gangs and youth violence
 - xii. gender-based violence/violence against women and girls (VAWG)
 - xiii. mental health
 - xiv. private fostering
 - xv. radicalisation

⁷ Detailed information on early help can be found in Chapter 1 of [Working Together to safeguard children](#)

⁸ The UK Data Protection Act 2018 (DPA 2018) is supplementary to the General Data Protection Regulation 2016 (the GDPR) and replaces DPA 1998.

- xvi.youth produced sexual imagery (sexting)
- xvii.teenage relationship abuse
- xviii.trafficking
- xix.child on child abuse
- xx.upskirting
- xxi.serious violence
- xxii.sexual harassment

Staff are aware that behaviours linked to drug taking, alcohol abuse, truanting and sexting put children in danger and that safeguarding issues can manifest themselves via child on child abuse.

We also recognise that abuse, neglect and safeguarding issues are complex and are rarely standalone events that can be covered by one definition or label. Staff are aware that in most cases multiple issues will overlap one another.

If staff are concerned about a child's welfare

- f. If staff notice any indicators of abuse/neglect or signs that a child may be experiencing a safeguarding issue they should record these concerns on CPOMS (Child Protection Online Management System) and pass it to the school's DSL (Designated Safeguarding Lead). Staff may also discuss their concerns in person with the DSL but the details of the concern should be recorded in writing.
- g. There will be occasions when staff may suspect that a pupil may be at risk, but have no 'real' evidence. The pupil's behaviour may have changed, their artwork could be bizarre, and they may write stories or poetry that reveal confusion or distress, or physical or inconclusive signs may have been noticed.
- h. The Ivy Education Trust recognise that the signs may be due to a variety of factors, for example, a parent has moved out, a pet has died, a grandparent is very ill or an accident has occurred. However, they may also indicate a child is being abused or is in need of safeguarding.
- i. In these circumstances staff will try to give the child the opportunity to talk. It is fine for staff to ask the pupil if they are OK or if they can help in any way.
- j. Following an initial conversation with the pupil, if the member of staff remains concerned they should discuss their concerns with the DSL (Designated Safeguarding Lead) and put them in writing. Records should include:
 - a clear and comprehensive summary of the concern;
 - details of how the concern was followed up and resolved;
 - a note of any action taken, decisions reached and the outcome.
- k. If the pupil does begin to reveal that they are being harmed, staff should follow the advice below regarding a pupil making a disclosure.

If a pupil discloses to a member of staff

- l. We recognise that it takes a lot of courage for a child to disclose they are being abused. They may feel ashamed, guilty or scared, their abuser may have threatened that something will happen if they tell, they may have lost all trust in adults or believe that what has happened is their fault. Sometimes they may not be aware that what is happening is abuse.
- m. A child who makes a disclosure may have to tell their story on a number of subsequent occasions to the police and/or social workers. Therefore, it is vital that their first experience of talking to a trusted adult is a positive one.

During their conversation with the pupil staff will;

- n. listen to what the child has to say and allow them to speak freely;
- o. remain calm and not overreact or act shocked or disgusted – the pupil may stop talking if they feel they are upsetting the listener;

- p. reassure the child that it is not their fault and that they have done the right thing in telling someone;
- q. not be afraid of silences – staff must remember how difficult it is for the pupil and allow them time to talk;
- r. take what the child is disclosing seriously;
- s. ask open questions and avoid asking leading questions;
- t. avoid jumping to conclusions, speculation or making accusations;
- u. not automatically offer any physical touch as comfort. It may be anything but comforting to a child who is being abused;
- v. avoid admonishing the child for not disclosing sooner. Saying things such as 'I do wish you had told me about it when it started' may be the staff member's way of being supportive but may be interpreted by the child to mean they have done something wrong; and
- w. tell the child what will happen next.

If a pupil talks to any member of staff about any risks to their safety or wellbeing the staff member will let the child know that they will have to pass the information on – staff are not allowed to keep secrets.

The member of staff should write up their conversation as soon as possible on the CPOMS (Child Protection Online Management System) in the pupil's own words. Staff should make this a matter of priority. The record should be signed and dated, the member of staff's name should be printed and it should also detail where the disclosure was made and who else was present. The record should be handed to the DSL (Designated Safeguarding Lead).

Notifying Parents

Schools will normally seek to discuss any concerns about a pupil with their parents. This must be handled sensitively and normally the DSL/DDSL (Designated Safeguarding Lead/Deputy) will make contact with the parent in the event of a concern, suspicion or disclosure.

However, if the school believes that notifying parents could increase the risk to the child or exacerbate the problem, advice will first be sought from children's MASH (Multi Agency Safeguarding Hub) e.g. familial sexual abuse.

Where there are concerns about forced marriage or honour-based abuse parents should not be informed a referral is being made as to do so may place the child at a significantly increased risk. In some circumstances it would be appropriate to contact the police.

Making a referral

- x. Concerns about a child or a disclosure should be immediately raised with the DSL (Designated Safeguarding Lead) who will help decide whether a referral to children's MASH (Multi Agency Safeguarding Hub) or other support is appropriate in accordance with Devon Children and Families Partnership (DCFP) Level of Need Tool⁹.

If a referral is needed then the DSL (Designated Safeguarding Lead) should make this rapidly and have the necessary systems in place to enable this to happen. However, anyone can make a referral and if for any reason a staff member thinks a referral is appropriate and one hasn't been made they can and should consider making a referral themselves.

- y. The child (subject to their age and understanding) and the parents will be told that a referral is being made, unless to do so would increase the risk to the child.
- z. If after a referral the child's situation does not appear to be improving the designated safeguarding lead (or the person that made the referral) should press for re-consideration to ensure their concerns have been addressed, and most importantly the child's situation improves.

⁹ DCFP Level of Need Tool

- aa. If a child is in immediate danger or is at risk of harm a referral should be made to children's MASH(Multi Agency Safeguarding Hub) and/or the police immediately. Anybody can make a referral.
- bb. Where referrals are not made by the DSL (Designated Safeguarding Lead), the DSL should be informed as soon as possible.

Supporting our Staff

- cc. We recognise that staff working in the Trust who have become involved with a child who has suffered harm, or appears to be likely to suffer harm may find the situation stressful and upsetting.
- dd. We will support such staff by providing an opportunity to talk through their anxieties with the DSLs(Designated Safeguarding Leads) and to seek further support as appropriate.

9. Children who are particularly vulnerable

The Ivy Education Trust recognises that some pupils are more vulnerable to abuse, neglect, exploitation and contextual safeguarding concerns and that additional barriers exist when recognising abuse for some children.

We understand that this increase in risk is due more to societal attitudes and assumptions or child protection procedures which fail to acknowledge children's diverse circumstances, rather than the individual child's personality, impairment or circumstances.

In some cases, possible indicators of abuse such as a child's mood, behaviour or injury might be assumed to relate to the child's impairment or disability rather than giving a cause for concern. Or a focus may be on the child's disability, special educational needs or situation without consideration of the full picture. In other cases, such as bullying, the child may be disproportionately impacted by the behaviour without outwardly showing any signs that they are experiencing it.

Some children may also find it harder to disclose abuse due to communication barriers, lack of access to a trusted adult or not being aware that what they are experiencing is abuse.

Any child may benefit from early help, but all Trust staff should be particularly alert to the potential need for early help for a child who:

- a. is disabled and has specific additional needs;
- b. has special educational needs (whether or not they have a statutory education, health and care plan);
- c. is a young carer;
- d. is showing signs of being drawn in to anti-social or criminal behaviour, including gang involvement and association with organised crime groups;
- e. is frequently missing/goes missing from care or from home;
- f. is misusing drugs or alcohol themselves;
- g. is at risk of modern slavery, trafficking or exploitation;
- h. is in a family circumstance presenting challenges for the child, such as substance abuse, adult mental health problems or domestic abuse;
- i. has returned home to their family from care;
- j. is showing early signs of abuse and/or neglect, and/or exploitation
- k. is at risk of being radicalised or exploited;
- l. is a privately fostered child;
- m. has an imprisoned parent;
- n. is experiencing mental health, wellbeing difficulties;
- o. is persistently absent from education (including persistently absent for part of the Trust day);
- p. Has experienced multiple suspensions, is at risk of being permanently excluded from schools, colleges and in alternative provision or a pupil referral unit.
- q. is at risk of 'honour' based abuse such as FGM or Forced Marriage

10. Anti-Bullying/Cyberbullying

Each school within the Ivy Education Trust has anti-bullying information set out in a separate document and acknowledges that to allow or condone bullying may lead to consideration under child protection procedures. This includes all forms e.g. cyber, racist, homophobic and gender related bullying. We keep a record of known bullying incidents which is shared with and analysed by the Trust and local governing bodies of the schools. All staff are aware that children with SEND and / or differences/perceived differences are more susceptible to being bullied / victims of child abuse.

If the bullying is particularly serious, or the anti-bullying procedures are seen to be ineffective, the Headteacher and the DSL (Designated Safeguarding Lead) will consider implementing child protection procedures.

The subject of bullying is addressed at regular intervals in PSHE education.

11. Racist Incidents

Our policy on racist incidents is set out separately and acknowledges that repeated racist incidents or a single serious incident may lead to consideration under child protection procedures. We keep a record of racist incidents and report them to the Local Authority.

12. Radicalisation and Extremism

The Prevent Duty for England and Wales (2023) under section 26 of the Counter-Terrorism and Security Act 2015 places a duty on education and other children's services to have due regard to the need to prevent people from being drawn into terrorism.

Extremism is defined as 'as 'vocal or active opposition to fundamental British values, including democracy, the rule of law, individual liberty and mutual respect and tolerance of different faiths and beliefs'. We also include in our definition of extremism calls for the death of members of our armed forces, whether in this country or overseas.

Some children are at risk of being radicalised; adopting beliefs and engaging in activities which are harmful, criminal or dangerous.

The Ivy Education Trust is clear that exploitation of vulnerable children and radicalisation should be viewed as a safeguarding concern and follows the Department for Education guidance for Trusts and childcare providers on preventing children and young people from being drawn into terrorism¹⁰.

The Ivy Education Trust seeks to protect children and young people against the messages of all violent extremism including, but not restricted to, those linked to Islamist ideology, or to Far Right / Neo Nazi / White Supremacist ideology, Irish Nationalist and Loyalist paramilitary groups, and extremist Animal Rights movements.

Trust staff receive training to help identify early signs of radicalisation and extremism. Indicators of vulnerability to radicalisation are in detailed in Appendix 6.

Opportunities are provided in the curriculum to enable pupils to discuss issues of religion, ethnicity and culture and the Trust follows the DfE advice Promoting Fundamental British Values as part of SMSC (spiritual, moral, social and cultural education) in Schools (2014)¹¹.

¹⁰ [The Prevent duty](#)

¹¹ [Promoting Fundamental British Values](#)

The school governors, the Headteacher and the DSL (Designated Safeguarding Lead) will assess the level of risk within the school and put actions in place to reduce that risk. Risk assessment may include, the use of schools' premises by external agencies, anti-bullying policy and other issues specific to the school's profile, community and philosophy.

When any member of staff has concerns that a pupil may be at risk of radicalisation or involvement in terrorism, they should speak with the DSL (Designated Safeguarding Lead). They should then follow normal safeguarding procedures. If the matter is urgent then Devon & Cornwall Police must be contacted by dialling 999. In non-urgent cases where police advice is sought then dial 101. The Department of Education has also set up a dedicated telephone helpline for staff and governors to raise concerns around Prevent (0800 011 3764)

13. Domestic Abuse

Domestic abuse represents one quarter of all violent crime. It is actual or threatened physical, emotional, psychological or sexual abuse. It involves the use of power and control by one person over another. It occurs regardless of race, ethnicity, gender, class, sexuality, age, and religion, mental or physical ability. Domestic abuse can also involve other types of abuse.

We use the term domestic abuse to reflect that a number of abusive and controlling behaviours are involved beyond violence.

Slapping, punching, kicking, bruising, rape, ridicule, constant criticism, threats, manipulation, sleep deprivation, social isolation, and other controlling behaviours all count as abuse.

Living in a home where domestic abuse takes place is harmful to children and can have a serious impact on their behaviour, wellbeing and understanding of healthy, positive relationships. Children who witness domestic abuse are at risk of significant harm and staff are alert to the signs and symptoms of a child suffering or witnessing domestic abuse (See Appendix 5).

14. Exploitation (incl Child Sex Exploitation, Child Criminal Exploitation & County Lines)

Both CSE and CCE are forms of abuse and both occur where an individual or group takes advantage of an imbalance in power to coerce, manipulate or deceive a child into sexual or criminal activity. This power imbalance could be due to age, gender, sexual identity, cognitive ability, physical strength, status, and /or access to economic or other resources. The abuse could be linked to an exchange for something the victim perceives that they need or want and/or will be to the financial benefit or other advantage (such as increase status) of the perpetrator or facilitator.

The abuse can be perpetrated by individuals or groups, males or females, and adults or children (who themselves may be experiencing exploitation). The abuse can be a one-off occurrence or a series of incidents over time and range from opportunistic to complex organised abuse. It may involve force and/or enticement-based methods of compliance and may, or may not, be accompanied by violence or threats of violence.

Victims can be exploited even when the activity appears consensual and it should be noted exploitation as well as being physical can be facilitated and/or take place online. The experience of girls who are criminally exploited can be very different from boys, the indicators may not be the same and both boys and girls that are being criminally exploited may be at higher risk of sexual exploitation.

CSE can occur over time or be a one off occurrence. CSE can affect any child, who has been coerced into engaging in sexual activities. This includes 16 and 17 year olds who can legally consent to have sex.

More definitions and indicators are included in Appendix 3.

Any concerns that a child is being or is at risk of being sexually or criminally exploited should be passed without delay to the DSL (Designated Safeguarding Lead). The Ivy Education Trust is aware there is a clear link between regular school absence/truancy, CSE and CCE. Staff should consider a child to be at potential CSE/CCE risk in the case of regular school absence/truancy and make reasonable enquiries with the child and parents to assess this risk.

The DSL (Designated Safeguarding Lead) will use the Devon Children and Families Partnership Adolescent Safety Framework Safer Me Assessment¹² on all occasions when there is a concern that a child is being or is at risk of being sexually or criminally exploited or where indicators have been observed that are consistent with a child who is being or who is at risk of being sexually or criminally exploited. The Safer Me Assessment will indicate to the DSL whether a Safer Me Early Help approach or referral to the Exploitation Hub is required. If the DSL is in any doubt they will contact MASH (Multi Agency Safeguarding Hub) consultation.

In all cases if the assessment identified any level of concern the DSL should contact their local MACE¹³ (Missing & Child Exploitation) and email the completed Safer Me assessment along with a MASH (Multi Agency Safeguarding Hub) enquiry form. If a child is in immediate danger the police should be called on 999.

The Ivy Education Trust is aware that a child often is not able to recognise the coercive nature of the abuse and does not see themselves as a victim. As a consequence, the child may resent what they perceive as interference by staff. However, staff must act on their concerns as they would for any other type of abuse.

The Ivy Education Trust includes the risks of sexual and criminal exploitation in the PSHE and RSE curriculum. Pupils will be informed of the grooming process and how to protect themselves from people who may potentially be intent on causing harm. They will be supported in terms of recognising and assessing risk in relation to CSE/CCE, including online, and knowing how and where to get help.

15. Female Genital Mutilation (FGM)

Female Genital Mutilation (FGM) is illegal in England and Wales under the FGM Act (2003). It is a form of child abuse and violence against women. A mandatory reporting duty requires teachers to report 'known' cases of FGM in under 18s, which are identified in the course of their professional work, to the police¹⁴.

The duty applies to all persons in The Ivy Education Trust who is employed or engaged to carry out 'teaching work' in the Trust, whether or not they have qualified teacher status. The duty applies to the individual who becomes aware of the case to make a report. It should not be transferred to the DSL (Designated Safeguarding Lead), however the DSL should be informed.

If a teacher is informed by a girl under 18 that an act of FGM has been carried out on her or a teacher observes physical signs which appear to show that an act of FGM has been carried out on a girl under 18 and they have no reason to believe the act was necessary for the girl's physical or mental health or for purposes connected with labour or birth, the teacher should personally make a report to the police force in which the girl resides by calling 101. The report should be made by the close of the next working day.

Trust staff are trained to be aware of risk indicators of FGM which are set out in Appendix 4. Concerns about FGM outside of the mandatory reporting duty should be reported as per Trust/School's child protection procedures. Staff should be particularly alert to suspicions or concerns expressed by female pupils about going on a long holiday during the summer vacation period. There should also be consideration of potential risk to other girls in the family and practicing community.

¹² [DCFP Adolescent Safety Framework info and Safer Me Assessment](#)

¹³ [DCFP MACE guidance](#)

¹⁴ [FGM procedural information](#)

Where there is a risk to life or likelihood of serious immediate harm the teacher should report the case immediately to the police, including dialing 999 if appropriate.

There are no circumstances in which a teacher or other member of staff should examine a girl.

16. Forced Marriage

A forced marriage is a marriage in which one or both people do not (or in cases of people with learning disabilities cannot) consent to the marriage but are coerced into it. Coercion may include physical, psychological, financial, sexual and emotional pressure. It may also involve physical or sexual violence and abuse.

Forced marriage is an appalling and indefensible practice and is recognised in the UK as a form of violence against women and men, domestic/child abuse and a serious abuse of human rights. Since June 2014 forcing someone to marry has become a criminal offence in England and Wales under the Anti-Social Behaviour, Crime and Policing Act 2014.

A forced marriage is not the same as an arranged marriage which is common in several cultures. The families of both spouses take a leading role in arranging the marriage but the choice of whether or not to accept the arrangement remains with the prospective spouses.

In addition, since February 2023 it has also been a crime to carry out any conduct whose purpose is to cause a child to marry before their eighteenth birthday, even if violence, threats or another form of coercion are not used. As with the existing forced marriage law, this applies to non-binding, unofficial 'marriages' as well as legal marriages.

Trust staff should never attempt to intervene directly as a Trust or through a third party. Contact should be made with MASH (Multi Agency Safeguarding Hub).

17. Honour-based Abuse

Honour-based abuse (HBV) can be described as a collection of practices, which are used to control behaviour within families or other social groups to protect perceived cultural and religious beliefs and/or honour. Such abuse can occur when perpetrators perceive that a relative has shamed the family and/or community by breaking their honour code.

Honour-based abuse might be committed against people who;

- a. become involved with a boyfriend or girlfriend from a different culture or religion;
- b. want to get out of an arranged marriage;
- c. want to get out of a forced marriage;
- d. wear clothes or take part in activities that might not be considered traditional within a particular culture.

It is a violation of human rights and may be a form of domestic and/or sexual abuse. There is no, and cannot be, honour or justification for abusing the human rights of others.

18. One Chance Rule

All staff are aware of the 'One Chance' Rule' in relation to forced marriage, FGM and HBV. Staff recognise they may only have one chance' to speak to a pupil who is a potential victim and have just one chance to save a life.

The Ivy Education Trust are aware that if the victim is not offered support following disclosure that the 'One Chance' opportunity may be lost. Therefore, all staff are aware of their responsibilities and obligations when they become aware of potential forced marriage, FGM and HBV cases.

19. Mental Health

Staff will be aware that mental health problems can, in some cases, be an indicator that a child has suffered or is at risk of suffering abuse, neglect or exploitation. Whilst Trust recognise that only appropriately trained professionals can diagnose mental health problems; staff are able to make day to day observations of children and identify such behaviour that may suggest they are experiencing a mental health problem or be at risk of developing one.

How traumatic ACE's and experiences of abuse and neglect can impact on a child's mental health, behaviour and education through to adolescence and adulthood will be covered in safeguarding awareness training and updates. If staff have a mental health concern about a child that is also a safeguarding concern they will share this with the DSL (Designated Safeguarding Lead) or deputy. Trust will also refer to the mental health and behaviour in Trusts guidance¹⁵

20. Private Fostering Arrangements

A private fostering arrangement occurs when someone other than a parent or close relative cares for a child for a period of 28 days or more, with the agreement of the child's parents. It applies to children under the age of 16 or 18 if the child is disabled. Children looked after by the local authority or who are placed in residential Trusts, children's homes or hospitals are not considered to be privately fostered.

Private fostering occurs in all cultures, including British culture and children may be privately fostered at any age.

The Ivy Education Trust recognise that most privately fostered children remain safe and well but are aware that safeguarding concerns have been raised in some cases. Therefore, all staff are alert to possible safeguarding issues, including the possibility that the child has been trafficked into the country.

By law, a parent, private foster carer or other persons involved in making a private fostering arrangement must notify children's services as soon as possible. However, where a member of staff becomes aware that a pupil may be in a private fostering arrangement they will raise this with the DSL (Designated Safeguarding Lead) and the DSL will notify MASH (Multi Agency Safeguarding Hub) of the circumstances.

21. Looked after children and previously looked after children

The most common reason for children becoming looked after is as a result of abuse and neglect. The Ivy Education Trust ensures that staff have the necessary skills and understanding to keep looked after/previously looked after children safe. Appropriate staff have information about a child's looked after legal status and care arrangements, including the level of authority delegated to the carer by the authority looking after the child and contact arrangements with birth parents or those with parental responsibility.

The designated teacher for looked after children and the DSL (Designated Safeguarding Lead) have details of the child's social worker and the name and contact details of the Devon County Council's virtual schools head for children in care.

The designated teacher for looked after children works with the virtual school head to discuss how Pupil Premium Plus funding can be best used to support the progress of looked after children in the Trust and meet the needs in the child's personal education plan. The designated teacher will follow the statutory guidance 'Promoting the education of Looked After Children'.

¹⁵ [Mental health and behaviour in Trusts: guidance](#)

22. Children Missing Education & children absent from education

Attendance, absence and exclusions are closely monitored. Each school will hold more than one emergency contact number for pupils and students where reasonably possible. A child going missing or who has unexplainable and/or persistent absences from education is a potential indicator of abuse, neglect and exploitation, including sexual abuse and sexual exploitation.

The DSL (Designated Safeguarding Lead) will monitor unauthorised absences and take appropriate action including notifying the local authority particularly where children go missing on repeat occasions and/or are missing for periods during the school day in conjunction with 'Children Missing Education: Statutory Guidance for Local Authorities'¹⁶.

Staff must be alert to signs of children at risk of travelling to conflict zones, female genital mutilation and forced marriage.

23. Online Safety

Our pupils increasingly use electronic equipment on a daily basis to access the internet and share content and images via social media sites such as Facebook, Twitter, Instagram, Snapchat and ooVoo.

Unfortunately, some adults and other children use these technologies to harm children. The harm might range from sending hurtful or abusive texts or emails, to grooming and enticing children to engage in sexual behaviour such as webcam photography or face-to-face meetings. Pupils may also be distressed or harmed by accessing inappropriate material such as pornographic websites or those which promote extremist behaviour, criminal activity, suicide or eating disorders.

Each school within the Trust has an online safety policy which explains how we try to keep pupils safe in school and how we respond to online safety incidents (See flowchart, Appendix 7).

Each school will also provide advice to parents when pupils are being asked to learn on line at home and consider how best to safeguard both pupils and staff.

Pupils are taught about online safety throughout the curriculum and all staff receive online safety training which is regularly updated including an understanding of the expectations, applicable roles and responsibilities in relation to filtering and monitoring.

24. Child on child Abuse (Child on Child) incl Sexual violence and sexual harassment

The DSL (Designated Safeguarding Lead), Local Governing Body, Trust board and Head Teacher will take due regard to Part 5, KCSiE

In most instances, the conduct of pupils towards each other will be covered by our behaviour policy. However, some allegations may be of such a serious nature that they may raise safeguarding concerns. The Ivy Education Trust recognise that children are capable of abusing their peers. It will not be passed off as 'banter' or 'part of growing up'. The forms of child on child abuse are outlined below.

- a. domestic abuse – an incident or pattern of actual or threatened acts of physical, sexual, financial and/or emotional abuse, perpetrated by an adolescent against a current or former dating partner regardless of gender or sexuality;
- b. bullying (including cyberbullying, prejudice-based and discriminatory bullying);
- c. child sexual exploitation – children under the age of 18 may be sexually abused in the context of exploitative relationships, contexts and situations by peers who are also under 18;
- d. harmful sexual behaviour – Children and young people presenting with sexual behaviours that are outside of developmentally 'normative' parameters and harmful to themselves and others (For more information, please see Appendix 2);

¹⁶ [CME Statutory Guidance for Local Authorities](#)

- e. upskirting – which typically involves taking a picture under a person’s clothing without them knowing, with the intention of viewing their genitals or buttocks to obtain sexual gratification, or cause the victim humiliation, distress or alarm;
- f. serious youth violence¹⁷ – Any offence of most serious violence or weapon enabled crime, where the victim is aged 1-19’ i.e. murder, manslaughter, rape, wounding with intent and causing grievous bodily harm. ‘Youth violence’ is defined in the same way, but also includes assault with injury offences. All staff will receive training so that they are aware of indicators which may signal that children are at risk from, or involved with serious violence and crime;
- g. initiation/hazing type violence and rituals (this could include activities involving harassment, abuse or humiliation used as a way of initiating a person into a group and may also include an online element); and
- h. consensual and non-consensual sharing of nudes and semi nudes images and or videos¹³ (also known as sexting or youth produced sexual imagery).

The term child on child abuse can refer to all of these definitions and a child may experience one or multiple facets of abuse at any one time. Therefore, our response will cut across these definitions and capture the complex web of their experiences.

There are also different gender issues that can be prevalent when dealing with child on child abuse (i.e. girls being sexually touched/assaulted or boys being subjected to initiation/hazing type violence).

The Ivy Education Trust aims to reduce the likelihood of child on child abuse through;

- i. the established ethos of respect, friendship, courtesy and kindness;
- j. high expectations of behaviour;
- k. clear consequences for unacceptable behaviour;
- l. providing a developmentally appropriate PSHE curriculum which develops pupils’ understanding of healthy relationships, acceptable behaviour, consent and keeping themselves safe;
- m. systems for any pupil to raise concerns with staff, knowing that they will be listened to, valued and believed;
- n. robust risk assessments and providing targeted work for pupils identified as being a potential risk to other pupils and those identified as being at risk.

Research indicates that young people rarely disclose child on child abuse and that if they do, it is likely to be to their friends. Therefore, the Ivy Education Trust will also educate pupils in how to support their friends if they are concerned about them, that they should talk to a trusted adult in school and what services they can contact for further advice.

Any concerns, disclosures or allegations of child on child abuse in any form should be referred to the DSL using the school’s child protection procedures as set out in this policy. Where a concern regarding child on child abuse has been disclosed to the DSL(s) (Designated Safeguarding Lead/s), advice and guidance will be sought from MASH (Multi Agency Safeguarding Hub) and where it is clear a crime has been committed or there is a risk of crime being committed the Police will be contacted.

Working with external agencies the school/Trust will respond to the unacceptable behaviour. If a pupil’s behaviour negatively impacts on the safety and welfare of other pupils then safeguards will be put in place to promote the well-being of the pupils affected and the victim and perpetrator will be provided with support.

25. Youth produced sexual imagery (sexting)¹⁸

The practice of children sharing images and videos via text message, email, social media or mobile messaging apps has become commonplace. However, this online technology has also given children the

¹⁷ [Preventing youth violence and gang involvement](#)

¹⁸ Youth refers to anyone under the age of 18

opportunity to produce and distribute sexual imagery in the form of photos and videos. Such imagery involving anyone under the age of 18 is illegal.

Youth produced sexual imagery refers to both images and videos where;

- a. A person under the age of 18 creates and shares sexual imagery of themselves with a peer under the age of 18.
- b. A person under the age of 18 shares sexual imagery created by another person under the age of 18 with a peer under the age of 18 or an adult.
- c. A person under the age of 18 is in possession of sexual imagery created by another person under the age of 18.

All incidents of this nature should be treated as a safeguarding concern and in line with the UKCIS guidance 'Sexting in Schools and colleges: responding to incidents and safeguarding young people'¹⁹, and 'Sharing nudes and semi-nudes: how to respond to an incident.'²⁰

Cases where sexual imagery of people under 18 has been shared by adults and where sexual imagery of a person of any age has been shared by an adult to a child is child sexual abuse and should be responded to accordingly.

If a member of staff becomes aware of an incident involving youth produced sexual imagery they should follow the child protection procedures and refer to the DSL (Designated Safeguarding Lead) as soon as possible. The member of staff should confiscate the device involved and set it to flight mode or, if this is not possible, turn it off. Staff should not view, copy or print the youth produced sexual imagery.

The DSL should hold an initial review meeting with appropriate school staff and subsequent interviews with the children involved (if appropriate). Parents should be informed at an early stage and involved in the process unless there is reason to believe that involving parents would put the child at risk of harm. At any point in the process if there is concern a young person has been harmed or is at risk of harm a referral should be made to MASH (Multi Agency Safeguarding Hub) or the Police as appropriate.

Immediate referral at the initial review stage should be made to MASH (Multi Agency Safeguarding Hub)/Police if;

- d. The incident involves an adult;
- e. There is good reason to believe that a young person has been coerced, blackmailed or groomed or if there are concerns about their capacity to consent (for example, owing to special education needs);
- f. What you know about the imagery suggests the content depicts sexual acts which are unusual for the child's development stage or are violent;
- g. The imagery involves sexual acts;
- h. The imagery involves anyone aged 12 or under;
- i. There is reason to believe a child is at immediate risk of harm owing to the sharing of the imagery, for example the child is presenting as suicidal or self-harming.

If none of the above apply then the DSL (Designated Safeguarding Lead) will use their professional judgement to assess the risk to pupils involved and may decide, with input from the Headteacher, to respond to the incident without escalation to MASH (Multi Agency Safeguarding Hub) or the police. Such decisions will be recorded.

In applying judgement, the DSL (Designated Safeguarding Lead) will consider if;

- j. there is a significant age difference between the sender/receiver;

¹⁹ [Sexting in Trusts and colleges](#)

²⁰ [Sharing nudes and semi-nudes: how to respond to an incident \(UCKIS\)](#)

- k. there is any coercion or encouragement beyond the sender/receiver;
- l. the imagery was shared and received with the knowledge of the child in the imagery;
- m. the child is more vulnerable than usual i.e. at risk;
- n. there is a significant impact on the children involved;
- o. the image is of a severe or extreme nature;
- p. the child involved understands consent;
- q. the situation is isolated or if the image been more widely distributed;
- r. there other circumstances relating to either the sender or recipient that may add cause for concern i.e. difficult home circumstances;
- s. the children have been involved in incidents relating to youth produced imagery before.

If any of these circumstances are present the situation will be escalated according to our child protection procedures, including reporting to the police or MASH (Multi Agency Safeguarding Hub). Otherwise, the situation will be managed within the school.

The DSL (Designated Safeguarding Lead) will record all incidents of youth produced sexual imagery, including both the actions taken, actions not taken, reasons for doing so and the resolution in line with safeguarding recording procedures.

26. Allegations against staff

All Trust staff should take care not to place themselves in a vulnerable position with a child. It is always advisable for interviews or work with individual children or parents to be conducted in view of other adults.

Guidance about conduct and safe practice, including safe use of mobile phones by staff and volunteers will be given at induction²¹.

We understand that a pupil may make an allegation against a member of staff or staff may have concerns about another staff member.

If such an allegation is made, or information is received which suggests that a person may be unsuitable to work with children, the member of staff receiving the allegation or aware of the information, will immediately inform the Headteacher²².

The Headteacher on all such occasions will discuss the content of the allegation with the Local Authority Designated Officer (LADO)²³ at the earliest opportunity and before taking any further action.

If the allegation made to a member of staff concerns the Headteacher, the person receiving the allegation will immediately inform the CEO (Chief Executive Officer) of the Trust who will consult the LADO as above, without notifying the Headteacher first.

The Trust will follow the Devon procedures for managing allegations against staff, procedures set out in Keeping Children Safe in Education 2023 and the Trust's Managing Allegations policy and procedures.

Suspension of the member of staff, excluding the Headteacher, against whom an allegation has been made, needs careful consideration, and the Headteacher will seek the advice of the LADO and an HR Consultant in making this decision.

In the event of an allegation against the Headteacher, the decision to suspend will be made by the CEO (Chief Executive Officer) with advice as above.

²¹ Refer to "Guidance for Safe Working Practice"

²² CEO (Chief Executive Officer) in the event of an allegation against the Headteacher

²³ Duty LADO 01392 384964 or email ladosecure-mailbox@devon.gov.uk

We have a procedure for managing the suspension of a contract for a community user in the event of an allegation arising in that context.

Staff, parents and governors are reminded that publication of material that may lead to the identification of a teacher who is the subject of an allegation is prohibited by law. Publication includes verbal conversations or writing including content placed on social media sites.

27. Whistle-blowing

We recognise that children cannot be expected to raise concerns in an environment where staff fail to do so.

All staff should be aware of their duty to raise concerns, where they exist, about the management of child protection, which may include the attitude or actions of colleagues, poor or unsafe practice and potential failures in the Trust's safeguarding arrangements. If it becomes necessary to consult outside the Trust, they should speak in the first instance, to the LADO (Local Authority Designated Officer) following the Whistleblowing Policy.

The NSPCC whistleblowing helpline is available for staff who do not feel able to raise concerns regarding child protection failures internally. Staff can call: 0800 028 0285 line is available from 8:00 AM to 8:00 PM, Monday to Friday and email: help@nspcc.org.uk

Whistle-blowing re the Headteacher should be made to the CEO (Chief Executive Officer) of the Trust whose contact details are readily available to staff (as pertinent to setting).

28. Physical Intervention

We acknowledge that staff must only ever use physical intervention as a last resort, when a child is endangering him/herself or others, and that at all times it must be the minimal force necessary to prevent injury to another person.

Such events should be recorded and signed by a witness.

Staff who are likely to need to use physical intervention will be appropriately trained.

We understand that physical intervention of a nature which causes injury or distress to a child may be considered under child protection or disciplinary procedures.

We recognise that touch is appropriate in the context of working with children, and all staff have been given 'Safe Practice' guidance to ensure they are clear about their professional boundary.

29. Confidentiality, sharing information and GDPR

All staff will understand that child protection issues warrant a high level of confidentiality, not only out of respect for the pupil and staff involved but also to ensure that information being released into the public domain does not compromise evidence.

Trust and college staff should be proactive in sharing as early as possible to help identify, assess and respond to risks or concerns about the safety and welfare of children, whether this is when problems are first emerging, or where a child is already known to local authority children's social care.

Staff should only discuss concerns with the DSL (Designated Safeguarding Officer), Headteacher or CEO (Chief Executive Officer) (depending on who is the subject of the concern). That person will then decide who else needs to have the information and they will disseminate it on a 'need-to-know' basis.

However, following a number of cases where senior leaders in Trust had failed to act upon concerns raised by staff, Keeping Children Safe in Education emphasises that any member of staff can contact children's social care if they are concerned about a child.

Child protection information will be stored and handled in line with the Data Protection Act 2018 ²⁴ and HM Government Information Sharing and Advice for practitioners providing safeguarding services to children, young people, parents and carers, July 2018

Information sharing is guided by the following principles:

- necessary and proportionate
- relevant
- adequate
- accurate
- timely
- secure

Fears about sharing information cannot be allowed to stand in the way of the need to promote the welfare and protect the safety of children.

The Trust will ensure that images of children used within publications, publicity and on the website has written parental consent prior to any images being taken and used. This consent will be obtained in line with school's annual data collection process.

30. This policy also links to Trust and individual school policies on:

- a. Behaviour
- b. Code of Conduct
- c. Whistleblowing
- d. Anti-bullying
- e. Health and Safety and Wellbeing
- f. Allegations against staff
- g. Complaints
- h. Attendance
- i. Curriculum
- j. PSHE
- k. Teaching and Learning
- l. Drug Education
- m. Relationships and Sex Education
- n. Physical intervention/Use of Reasonable Force
- o. Online Safety, including staff use of mobile phones
- p. Recruitment and Selection and Disclosure
- q. Intimate Care
- r. Radicalisation and Extremism
- s. GDPR and Data Protection

²⁴ The UK Data Protection Act 2018 (DPA 2018) is supplementary to the General Data Protection Regulation 2016 (the GDPR) and replaces DPA 1998.

Summary of changes for September 2024

Ref	Changes made	Reasons why
	Global changes - Replaced reference to Keeping Children Safe in Education 2023 with Keeping Children Safe in education 2024	To reflect updated statutory guidance
Pg 5	Safeguarding statement Slight change in text to ensure protected characteristics are listed together	DCC Model policy guidance.
Pg 6	Terminology Working Together to Safeguarding Children's definition of safeguarding included	Updated KCSIE document
Pg 7	Policy aims Additional text with regard to procedures, disclosures and referrals	DCC Model policy guidance.
Pg 8 e	Addition of cyberbullying	Updated KCSIE document
Pg 13 Bbb Ccc Ddd	Additions in line with changes to KCSIE	Updated KCSIE document
Pg 14 f	Confidentiality Addition of how to store safeguarding files.	Updated KCSIE document
Point 9	Children are particularly vulnerable Abuse and Neglect has been changed to Abuse, Neglect and Exploitation	Updated KCSIE document
Point 9 p	Additional bullet point added - Has experienced multiple suspensions, is at risk of being permanently excluded from schools, colleges and in alternative provision or a pupil referral unit.	Updated KCSIE document
Point 12	Change of date to Prevent duty to 2023	Policy update
Point 12	Change to Prevent consultation line number	Change of phone number
Point 22	Addition of Unexplainable and/or persistent absences from education exploitation	Updated KCSIE document
App 1	Signs of abuse in children Additional bullet point- Unexplainable and/or persistent absences from education	Updated KCSIE document
App 1	Bruising Addition of information on Mongolian Blue Spot	DCC Model policy guidance.
App 5	Domestic abuse Updated details for contacting agencies	Changes to phone numbers and web addresses
App 6	Updated link to policies and guidance for Prevent Duty	Updated guidance

App 8	Link to guidance for schools on provision for transgender pupils	To reflect current guidance
	MASH and Early Help contacts poster updated to reflect change to Devon Children's Front Door Services	New contacts and new name for MASH

AMENDMENT/REVIEW RECORD

Date	Reviewed by	Nature of change	Next Review Date
September 2021	SD	New Trust-wide policy for OLT. Updated in line with KCSiE guidance	As required and no later than September 2022.
September 2022	SD	Updated in line with KCSiE guidance	As required and no later than September 2023.
September 2023	LP and CF	Updated in line with KCSiE guidance	As required and no later than September 2024.
September 2024	CF	Updated in line with KCSiE guidance/DCC model policy	As required and no later than September 2025.

Appendix 1

Recognising signs of child abuse

Categories of Abuse:

- i. Physical Abuse
- ii. Emotional Abuse (including Domestic Abuse)
- iii. Sexual Abuse (including child sexual exploitation)
- iv. Neglect

Signs of Abuse in Children:

The following non-specific signs may indicate something is wrong:

- v. Significant change in behaviour
- vi. Extreme anger or sadness
- vii. Aggressive and attention-needing behaviour
- viii. Suspicious bruises with unsatisfactory explanations
- ix. Lack of self-esteem
- x. Self-injury
- xi. Depression and/or anxiousness
- xii. Age inappropriate sexual behaviour
- xiii. Child Sexual Exploitation
- xiv. Criminality
- xv. Substance abuse
- xvi. Mental health problems
- xvii. Poor attendance
- xviii. Unexplainable and/or persistent absences from education

Risk Indicators

The factors described in this section are frequently found in cases of child abuse. Their presence is not proof that abuse has occurred, but:

- xix. Must be regarded as indicators of the possibility of significant harm
- xx. Justifies the need for careful assessment and discussion with designated / named / lead person, manager, (or in the absence of all those individuals, an experienced colleague)
- xxi. May require consultation with and / or referral to Children's Services

The absence of such indicators does not mean that abuse or neglect has not occurred.

In an abusive relationship the child may:

- xxii. Appear frightened of the parent/s
- xxiii. Act in a way that is inappropriate to her/his age and development (though full account needs to be taken of different patterns of development and different ethnic groups)

The parent or carer may:

- xxiv. Persistently avoid child health promotion services and treatment of the child's episodic illnesses
- xxv. Have unrealistic expectations of the child
- xxvi. Frequently complain about/to the child and may fail to provide attention or praise (high criticism/low warmth environment)
- xxvii. Be absent or misusing substances
- xxviii. Persistently refuse to allow access on home visits

- xxix. Be involved in domestic abuse

Staff should be aware of the potential risk to children when individuals, previously known or suspected to have abused children, move into the household.

Recognising Physical Abuse

The following are often regarded as indicators of concern:

- xxx. An explanation which is inconsistent with an injury
- xxxi. Several different explanations provided for an injury
- xxxii. Unexplained delay in seeking treatment
- xxxiii. The parents/carers are uninterested or undisturbed by an accident or injury
- xxxiv. Parents are absent without good reason when their child is presented for treatment
- xxxv. Repeated presentation of minor injuries (which may represent a “cry for help” and if ignored could lead to a more serious injury)
- xxxvi. Family use of different doctors and A&E departments
- xxxvii. Reluctance to give information or mention previous injuries

Bruising

Children can have accidental bruising, but the following must be considered as non-accidental unless there is evidence or an adequate explanation provided:

- xxxviii. Any bruising to a pre-crawling or pre-walking baby
- xxxix. Bruising in or around the mouth, particularly in small babies which may indicate force feeding
- xl. Two simultaneous bruised eyes, without bruising to the forehead, (rarely accidental, though a single bruised eye can be accidental or abusive)
- xli. Repeated or multiple bruising on the head or on sites unlikely to be injured accidentally
- xlii. Variation in colour possibly indicating injuries caused at different times
- xliii. The outline of an object used e.g. belt marks, hand prints or a hair brush
- xliv. Bruising or tears around, or behind, the earlobe/s indicating injury by pulling or twisting
- xliv. Bruising around the face
- xlvi. Grasp marks on small children
- xlvii. Bruising on the arms, buttocks and thighs may be an indicator of sexual abuse

Mongolian Blue Spot: Bruising in non-mobile children is rare and may indicate abuse or neglect. Birth marks, especially Mongolian Blue Spots, can mimic bruising. Mongolian Blue Spot can be identified (see below), however if in any doubt as to the cause of the bruise refer to [Southwest Child Protection Procedures](#) Local Authority guidance and consultation.

- Areas of skin hyperpigmentation – flat, not raised, swollen or inflamed
- Not painful to touch
- Usually present at birth/ develop soon afterwards
- Will not change in shape or colour within a few days
- Normally uniform blue/ grey in colour across the mark
- Common in African, Middle Eastern, Mediterranean and Asian children
- While most occur at the lower back and buttocks, they can appear anywhere (e.g. back of shoulder or limb). Scalp/ face rarely affected
- Can be single/ multiple, vary in size, but mostly few centimetres diameter
- Gradually fade over many year

Bite Marks

Bite marks can leave clear impressions of the teeth. Human bite marks are oval or crescent shaped. Those over 3 cm in diameter are more likely to have been caused by an adult or older child.

A medical opinion should be sought where there is any doubt over the origin of the bite.

Burns and Scalds

It can be difficult to distinguish between accidental and non-accidental burns and scalds, and will always require experienced medical opinion. Any burn with a clear outline may be suspicious e.g.:

- xlviii. Circular burns from cigarettes (but may be friction burns if along the bony protuberance of the spine)
- xlix. Linear burns from hot metal rods or electrical fire elements
 - I. Burns of uniform depth over a large area
 - ii. Scalds that have a line indicating immersion or poured liquid (a child getting into hot water is his/her own accord will struggle to get out and cause splash marks)
 - iii. Old scars indicating previous burns/scalds which did not have appropriate treatment or adequate explanation

Scalds to the buttocks of a small child, particularly in the absence of burns to the feet, are indicative of dipping into a hot liquid or bath.

Fractures

Fractures may cause pain, swelling and discolouration over a bone or joint. Non-mobile children rarely sustain fractures.

There are grounds for concern if:

- liii. The history provided is vague, non-existent or inconsistent with the fracture type
- liv. There are associated old fractures
- lv. Medical attention is sought after a period of delay when the fracture has caused symptoms such as swelling, pain or loss of movement
- lvi. There is an unexplained fracture in the first year of life

Scars

A large number of scars or scars of different sizes or ages, or on different parts of the body, may suggest abuse.

Recognising Emotional Abuse

Emotional abuse may be difficult to recognise, as the signs are usually behavioural rather than physical. The manifestations of emotional abuse might also indicate the presence of other kinds of abuse. The indicators of emotional abuse are often also associated with other forms of abuse.

The following may be indicators of emotional abuse:

- lvii. Developmental delay
- lviii. Abnormal attachment between a child and parent/carer e.g. anxious, indiscriminate or not attachment
- lix. Indiscriminate attachment or failure to attach
- lx. Aggressive behaviour towards others
- lxi. Scapegoated within the family
- lxii. Frozen watchfulness, particularly in pre-Trust children
- lxiii. Low self-esteem and lack of confidence
- lxiv. Withdrawn or seen as a "loner" – difficulty relating to others

Recognising Signs of Sexual Abuse

Boys and girls of all ages may be sexually abused and are frequently scared to say anything due to guilt and/or fear. This is particularly difficult for a child to talk about and full account should be taken of the cultural sensitivities of any individual child/family.

Recognition can be difficult, unless the child discloses and is believed. There may be no physical signs and

indications are likely to be emotional/behavioural.

Some behavioural indicators associated with this form of abuse are:

- lxv. Inappropriate sexualised conduct
- lxvi. Sexually explicit behaviour, play or conversation, inappropriate to the child's age
- lxvii. Continual and inappropriate or excessive masturbation
- lxviii. Self-harm (including eating disorder), self-mutilation and suicide attempts
- lxix. Involvement in prostitution or indiscriminate choice of sexual partners
- lxx. An anxious unwillingness to remove clothes e.g. for sports events (but this may be related to cultural norms or physical difficulties)

Some physical indicators associated with this form of abuse are:

- lxxi. Pain or itching of genital area
- lxxii. Blood on underclothes
- lxxiii. Pregnancy in a younger girl where the identity of the father is not disclosed
- lxxiv. Physical symptoms such as injuries to the genital or anal area, bruising to buttocks, abdomen and thighs, sexually transmitted disease, presence of semen on vagina, anus, external genitalia or clothing

Recognising Neglect

Evidence of neglect is built up over a period of time and can cover different aspects of parenting. Indicators include:

- lxxv. Failure by parents or carers to meet the basic essential needs e.g. adequate food, clothes, warmth, hygiene and medical care
- lxxvi. A child seen to be listless, apathetic and irresponsive with no apparent medical cause
- lxxvii. Failure of child to grow within normal expected pattern, with accompanying weight loss
- lxxviii. Child thrives away from home environment
- lxxix. Child frequently absent from Trust
- lxxx. Child left with adults who are intoxicated or violent
- lxxxi. Child abandoned or left alone for excessive periods

Appendix 2

Sexual Harassment, Sexual Violence and Harmful Sexual Behaviour

The boundary between what is abusive and what is part of normal childhood or youthful experimentation can be blurred. The determination of whether behaviour is developmental, inappropriate or abusive will hinge around the related concepts of true consent, power imbalance and exploitation. This may include children and young people who exhibit a range of sexually problematic behaviour such as indecent exposure, obscene telephone calls, fetishism, bestiality and sexual abuse against adults, peers or children. Staff should be vigilant to:

- lxxxii. bullying (including cyberbullying)
- lxxxiii. physical abuse such as hitting, kicking, shaking, biting, hair pulling, or otherwise causing physical harm
- lxxxiv. sexual violence and sexual harassment
- lxxxv. sexting (also known as youth produced sexual imagery)
- lxxxvi. initiation/hazing type violence and rituals
- lxxxvii. upskirting

Developmental Sexual Activity

Encompasses those actions that are to be expected from children and young people as they move from infancy through to an adult understanding of their physical, emotional and behavioural relationships with each other. Such sexual activity is essentially information gathering and experience testing. It is characterised by mutuality and of the seeking of consent.

Inappropriate Sexual Behaviour

Can be inappropriate socially, in appropriate to development, or both. In considering whether behaviour fits into this category, it is important to consider what negative effects it has on any of the parties involved and what concerns it raises about a child or young person. It should be recognised that some actions may be motivated by information seeking, but still cause significant upset, confusion, worry, physical damage, etc. It may also be that the behaviour is “acting out” which may derive from other sexual situations to which the child or young person has been exposed. If an act appears to have been inappropriate, there may still be a need for some form of behaviour management or intervention. For some children, educative inputs may be enough to address the behaviour.

Abusive sexual activity included any behaviour involving coercion, threats, aggression together with secrecy, or where one participant relies on an unequal power base. In order to more fully determine the nature of the incident the following factors should be given consideration. The presence of exploitation in terms of:

Equality – consider differentials of physical, cognitive and emotional development, power and control and authority, passive and assertive tendencies

Consent – agreement including all the following:

- lxxxviii. Understanding that is proposed based on age, maturity, development level, functioning and experience
- lxxxix. Knowledge of society's standards for what is being proposed
 - xc. Awareness of potential consequences and alternatives
 - xci. Assumption that agreements or disagreements will be respected equally
 - xcii. Voluntary decision
 - xciii. Mental competence

Coercion – the young perpetrator who abuses may use techniques like bribing, manipulation and emotional threats of secondary gains and losses that is loss of love, friendship, etc. Some may use physical force, brutality or the threat of these regardless of victim resistance.

In evaluating sexual behaviour of children and young people, the above information should be used only as a guide. Further information and advice is available in the Devon multi-agency protocol “Working with Sexually Active Young People” available at https://www.proceduresonline.com/swcpp/devon/p_underage_sexual_act.html or go to South West Child Protection Procedures (www.proceduresonline.com) choose Child Protection Procedures, scroll down to Safeguarding Practice Guidance.

Appendix 3

Exploitation (including Child Sex Exploitation, Child Criminal Exploitation and County Lines)

The following list of indicators is not exhaustive or definitive but it does highlight common signs which can assist professionals in identifying children or young people who may be victims of sexual or criminal exploitation.

Signs include:

- xciv. going missing from home or school
- xcv. regular school absence/truancy
- x cvi. underage sexual activity
- xcvii. inappropriate sexual or sexualised behaviour
- xcviii. sexually risky behaviour, 'swapping' sex
- xcix. repeat sexually transmitted infections
 - c. in girls, repeat pregnancy, abortions, miscarriage
 - ci. receiving unexplained gifts or gifts from unknown sources
 - cii. having multiple mobile phones and worrying about losing contact via mobile
 - ciii. online safety concerns such as youth produced sexual imagery or being coerced into sharing explicit images.
- civ. having unaffordable new things (clothes, mobile) or expensive habits (alcohol, drugs)
- cv. changes in the way they dress
- cvi. going to hotels or other unusual locations to meet friends
- c vii. seen at known places of concern
- c viii. moving around the country, appearing in new towns or cities, not knowing where they are
- c ix. getting in/out of different cars driven by unknown adults
- cx. having older boyfriends or girlfriends
- c xi. contact with known perpetrators
- c xii. involved in abusive relationships, intimidated and fearful of certain people or situations
- c xiii. hanging out with groups of older people, or anti-social groups, or with other vulnerable peers
- c xiv. associating with other young people involved in sexual exploitation
- c xv. recruiting other young people to exploitative situations
- c xvi. truancy, exclusion, disengagement with school, opting out of education altogether
- c xvii. unexplained changes in behaviour or personality (chaotic, aggressive, sexual)
- c xviii. mood swings, volatile behaviour, emotional distress
- c xix. self-harming, suicidal thoughts, suicide attempts, overdosing, eating disorders
- c xx. drug or alcohol misuse
- c xxi. getting involved in crime
- c xxii. police involvement, police records
- c xxiii. involved in gangs, gang fights, gang membership
- c xxiv. injuries from physical assault, physical restraint, sexual assault.

Child Criminal Exploitation can include children being forced or manipulated into transporting drugs or money through county lines, working in cannabis factories, shoplifting or pickpocketing. They can also be forced or manipulated into committing vehicle crime or threatening/committing serious violence to others

County lines is a term used to describe gangs and organised criminal networks involved in the exporting of illegal drugs (primarily crack cocaine and heroin) into one or more importing areas (within the UK), using dedicated mobile phone lines or other form of 'deal line.'

Exploitation is an integral part of the county lines offending model with children and vulnerable adults being exploited to move (and store) drugs and money. The same grooming models used to coerce, intimidate and

abuse individuals for sexual and criminal exploitation are also used for grooming vulnerable individuals for county lines.

CSE is a form of child sexual abuse. Sexual abuse may involve physical contact, including assault by penetration (for example, rape or oral sex) or nonpenetrative acts such as masturbation, kissing, rubbing, and touching outside clothing. It may include non-contact activities, such as involving children in the production of sexual images, forcing children to look at sexual images or watch sexual activities, encouraging children to behave in sexually inappropriate ways or grooming a child in preparation for abuse including via the internet.

For further information on signs of a child's involvement in sexual exploitation: [Child sexual exploitation: guide for practitioners](#)

For further information on County Lines: [Criminal exploitation of children and vulnerable adults: county lines guidance](#)

Appendix 4

Female Genital Mutilation (FGM)

It is essential that staff are aware of FGM practices and the need to look for signs, symptoms and other indicators of FGM. If a member of staff, in the course of their work, discovers that an act of FGM appears to have been carried out, the member of staff must report this to the Police.

Female Genital Mutilation (FGM) is illegal in England and Wales under the FGM Act 2003 ("the 2003 Act"). It is a form of child abuse and violence against women. FGM comprises all procedures involving partial or total removal of the external female genitalia for non-medical reasons.

Section 5B of the 2003 Act¹ introduces a mandatory reporting duty which requires regulated health and social care professionals and teachers in England and Wales to report 'known' cases of FGM in under 18s which they identify in the course of their professional work to the police. The duty came into force on 31 October 2015.

What is FGM?

It involves procedures that intentionally alter/injure the female genital organs for non-medical reasons.

4 types of procedure:

Type 1 Clitoridectomy – partial/total removal of clitoris

Type 2 Excision – partial/total removal of clitoris and labia minora

Type 3 Infibulation entrance to vagina is narrowed by repositioning the inner/outer labia

Type 4 all other procedures that may include: pricking, piercing, incising, cauterising and scraping the genital area.

Why is it carried out?

Belief that:

- cxxv. FGM brings status/respect to the girl – social acceptance for marriage
- cxxvi. Preserves a girl's virginity
- cxxvii. Part of being a woman / rite of passage
- cxxviii. Upholds family honour
- cxxix. Cleanses and purifies the girl
- cxxx. Gives a sense of belonging to the community
- cxxxi. Fulfils a religious requirement
- cxxxii. Perpetuates a custom/tradition
- cxxxiii. Helps girls be clean / hygienic
- cxxxiv. Is cosmetically desirable
- cxxxv. Mistakenly believed to make childbirth easier

Is FGM legal?

FGM is internationally recognised as a violation of human rights of girls and women. It is illegal in most countries including the UK.

Circumstances and occurrences that may point to FGM happening are:

- cxxxvi. Child talking about getting ready for a special ceremony
- cxxxvii. Family taking a long trip abroad
- cxxxviii. Child's family being from one of the 'at risk' communities for FGM (Kenya, Somalia, Sudan, Sierra Leon, Egypt, Nigeria, Eritrea as well as non-African communities including Yemeni, Afghani, Kurdistan, Indonesia and Pakistan)

- cxxxix. Knowledge that the child's sibling has undergone FGM
- cxl. Child talks about going abroad to be 'cut' or to prepare for marriage

Signs that may indicate a child has undergone FGM:

- cxli. Prolonged absence from Trust and other activities
- cxlii. Behaviour change on return from a holiday abroad, such as being withdrawn and appearing subdued
- cxliii. Bladder or menstrual problems
- cxliv. Finding it difficult to sit still and looking uncomfortable
- cxlv. Complaining about pain between the legs
- cxlvi. Mentioning something somebody did to them that they are not allowed to talk about
- cxlvii. Secretive behaviour, including isolating themselves from the group
- cxlviii. Reluctance to take part in physical activity
- cxlix. Repeated urinal tract infection
- cl. Disclosure

The 'One Chance' rule

As with Forced Marriage there is the 'One Chance' rule. It is essential that we as a Trust take action **without delay** and make a referral to children's services.

Appendix 5

Domestic Abuse (incl Operation Encompass)

How does it affect children?

Children can be traumatised by seeing and hearing violence and abuse. They may also be directly targeted by the abuser or take on a protective role and get caught in the middle. In the long term this can lead to serious long lasting emotional and psychological impact on children. In some cases children may blame themselves for the abuse or may have had to leave the family home as a result.

What are the signs to look out for?

Children affected by domestic abuse reflect their distress in a variety of ways. They may change their usual behaviour and become withdrawn, tired, start to wet the bed and have behavioural difficulties. They may not want to leave their house or may become reluctant to return. Others will excel, using their time in your care as a way to escape from their home life. None of these signs are exclusive to domestic abuse so when you are considering changes in behaviours and concerns about a child, think about whether domestic abuse may be a factor.

What should I do if I suspect a family is affected by domestic abuse?

Contact: <https://new.devon.gov.uk/dsva/>

If you are concerned about a child or young person in Devon please contact the [Multi-Agency Safeguarding Hub \(MASH\)](#) on 0345 155 1071 or email mashsecure@devon.gov.uk.

If you are concerned about an adult (aged 16+) in Devon please complete the [Risk Identification Checklist](#) (Safelives DASH RIC) to identify the level of risk which support service to refer them too, and follow the advice on the [MARAC page](#) for all levels of risk.

If you are concerned about a vulnerable adult please contact [Adult Social Care](#) on 03451551007 (9am – 5pm Monday to Thursday, Friday 9am – 4.30pm and 9am – 5pm on Saturdays), Alternatively, you can [download a Word version of the report a safeguarding concern form](#) and email it to adultsc.safeguardingadultservices-mailbox@devon.gov.uk (Devon Safeguarding Adults Service). In an emergency, please contact the Emergency Duty Service 0345 6000388.

Fear Free Support Service is a charity delivering support services to women and young people experiencing the trauma of domestic abuse and sexual violence. Telephone 0345 155 1074 or email admin.devon@fearfree.org.uk

SAFE (Stop Abuse For Everyone) is a charity based in Exeter providing help and support to children and families who have experienced domestic abuse and violence. Telephone 030 30 30 0112 or visit the website [SAFE Foundation \(wearesafe.org.uk\)](http://SAFE Foundation (wearesafe.org.uk))

National Domestic Abuse Helpline Refuge runs the National Domestic Abuse Helpline, available 24hour a day 0808 2000 247 and its website offers guidance and support for potential victims.

Refuge: <https://www.refuge.org.uk/>

Operation Encompass helps police and Trusts work together to provide emotional and practical help for children. Police will inform the 'key adult' within Trust if they have been called to an incident of domestic abuse, where there are children in the household before registration the next day.

Appendix 6

INDICATORS OF VULNERABILITY TO RADICALISATION

1. Radicalisation refers to the process by which a person comes to support terrorism and forms of extremism leading to terrorism.
2. Extremism is defined by the Government in the Prevent Strategy as:

Vocal or active opposition to fundamental British values, including democracy, the rule of law, individual liberty and mutual respect and tolerance of different faiths and beliefs. We also include in our definition of extremism calls for the death of members of our armed forces, whether in this country or overseas.

3. Extremism is defined by the Crown Prosecution Service as:
The demonstration of unacceptable behaviour by using any means or medium to express views which:
 - Encourage, justify or glorify terrorist violence in furtherance of particular beliefs;
 - Seek to provoke others to terrorist acts;
 - Encourage other serious criminal activity or seek to provoke others to serious criminal acts; or
 - Foster hatred which might lead to inter-community violence in the UK.

There is no such thing as a “typical extremist”: those who become involved in extremist actions come from a range of backgrounds and experiences, and most individuals, even those who hold radical views, do not become involved in violent extremist activity.

Pupils may become susceptible to radicalisation through a range of social, personal and environmental factors - it is known that violent extremists exploit vulnerabilities in individuals to drive a wedge between them and their families and communities. It is vital that Trust staff are able to recognise those vulnerabilities.

Indicators of vulnerability include:

- Identity Crisis – the student / pupil is distanced from their cultural / religious heritage and experiences discomfort about their place in society;
- Personal Crisis – the student / pupil may be experiencing family tensions; a sense of isolation; and low self-esteem; they may have dissociated from their existing friendship group and become involved with a new and different group of friends; they may be searching for answers to questions about identity, faith and belonging;
- Personal Circumstances – migration; local community tensions; and events affecting the student / pupil's country or region of origin may contribute to a sense of grievance that is triggered by personal experience of racism or discrimination or aspects of Government policy;
- Unmet Aspirations – the student / pupil may have perceptions of injustice; a feeling of failure; rejection of civic life;
- Experiences of Criminality – which may include involvement with criminal groups, imprisonment, and poor resettlement / reintegration;
- Special Educational Need – students / pupils may experience difficulties with social interaction, empathy with others, understanding the consequences of their actions and awareness of the motivations of others.

However, this list is not exhaustive, nor does it mean that all young people experiencing the above are at risk of radicalisation for the purposes of violent extremism.

More critical risk factors could include:

- Being in contact with extremist recruiters;

- Accessing violent extremist websites, especially those with a social networking element;
- Possessing or accessing violent extremist literature;
- Using extremist narratives and a global ideology to explain personal disadvantage;
- Justifying the use of violence to solve societal issues;
- Joining or seeking to join extremist organisations; and
- Significant changes to appearance and / or behaviour;
- Experiencing a high level of social isolation resulting in issues of identity crisis and / or personal crisis.

The Prevent duty ensures Trusts and colleges have 'due regard' to the need to prevent people from being drawn into terrorism.

Channel is the voluntary, confidential support programme which focuses on providing support at an early stage to individuals that have been identified as being vulnerable to radicalisation. Prevent referrals may be passed to the multi-agency Channel panel to determine whether individuals require support.

[The Prevent Duty can be accessed via this link.](#) (Trust specific para's 57-76)

[The Prevent duty: safeguarding learners vulnerable to radicalisation.](#)

[The Prevent Duty in higher education \(HE\): training and guidance for practitioners.](#)

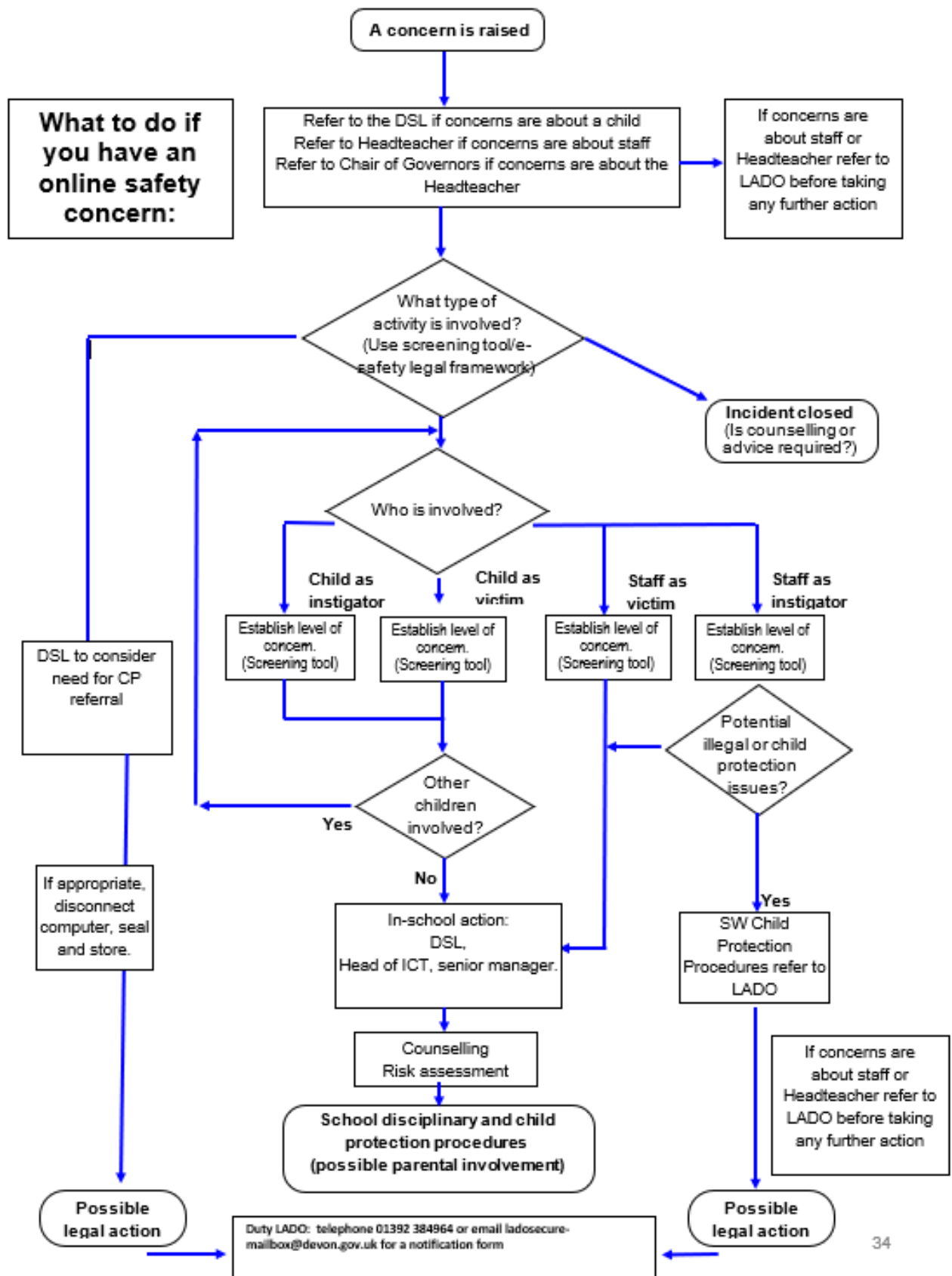
Guidance on Channel <https://www.gov.uk/government/publications/channel-guidance>

Further information can be obtained from the Home Office website.

P
o
t
e
n
t
i
a
l
i
l
l
e
g
a
l
o
r
c

h
i
l
d

Appendix 7



Appendix 8

Further advice on child protection is available from:

NSPCC: <http://www.nspcc.org.uk/>

Childline: <http://www.childline.org.uk/pages/home.aspx>

Anti-Bullying Alliance: <http://anti-bullyingalliance.org.uk/>

Beat Bullying: <http://www.beatbullying.org/>

Childnet International –making the internet a great and safe place for children. Includes resources for professionals and parents <http://www.childnet.com/>

Thinkuknow (includes resources for professionals and parents) <https://www.thinkuknow.co.uk/>

Safer Internet Centre <http://www.saferinternet.org.uk/>

Transgender [Guidance for maintained schools and academies in England on provision for transgender pupils November 2022](#)



9

Children's Front Door



If you are concerned that a child is being abused, or to request Early Help (L3) support you can

call: 0345 155 1071 or

complete the Request for Support online form available at:

<https://devoncountycouncil.outsystemsenterprise.com/MASH/homepage>

The DevonSCP Children's Front Door **consultation line** for **professionals only: 01392 388428**

Emergency Duty Team out of hours **0345 6000 388**

Police non-emergency 101

For all LADO enquiries Exeter (01392) 384964

ladosecure-mailbox@devon.gcsx.gov.uk

Further info: <https://new.devon.gov.uk>

[Managing allegations - Devon Children and Families Partnership \(dcfp.org.uk\)](http://dcfp.org.uk)

Early Help Team

Head of Service: Lise Bird

Early Help Locality Contact information:

<https://www.devonscp.org.uk/document/early-help-locality-contact-information/>

Locality Early Help Mailbox

North: earlyhelpnorthsecure-mailbox@devon.gov.uk

Mid & East: earlyhelpmidwestsecure-mailbox@devon.gov.uk

South & West: earlyhelpsouthsecure-mailbox@devon.gov.uk

Exeter: earlyhelpexetersecure-mailbox@devon.gov.uk

For emergencies outside of office hours please call:

0345 6000 388